

## Utilities

The residents are financially responsible for electric, telephone, internet and cable.

## Activities

Pinckney Hill Commons has partnered with the Charles A. Melton Center to provide a wide variety of educational, recreational and fun programming.

## Staff

Pinckney Hill Commons will have dedicated staff which includes a site manager, maintenance, and a social services coordinator.

**Church Housing Corp./ St. Peter's Management provides housing with financial peace of mind.**

*"We believe all people should have the opportunity to live with dignity and distinction in their communities."*

### NON- DISCRIMINATION

Pinckney Hill Commons will not discriminate based on race, color, sex, age, ancestry, handicap, familial status, marital status, sexual orientation, gender identity, or national origin.

### ABOUT PINCKNEY HILL COMMONS

Pinckney Hill Commons is a smoke free, Tax Credit property. Residents must income qualify to reside in any of the buildings. Income and assets will be recertified at least on an annual basis.



We are pledged to the letter of the policy of achievement of equal housing opportunity. We encourage and support affirmative advertising and a marketing program in which there are no barriers to obtaining housing on the basis of race, color, religion, national origin, sex or familial status.



Church  
Housing Corp.

606 Main St,  
Phoenixville PA 19460  
[inquiries@chcliving.org](mailto:inquiries@chcliving.org)  
610-933-4383



Church  
Housing Corp.

## Pinckney Hill Commons



## One and Two Bedroom Apartments

500 E. Market Street  
West Chester, PA

### Building information

- Secured building
- One floor living
- Laundry on 1<sup>st</sup> and 3<sup>rd</sup> Floor
- Spacious community room with fireplace
- Activity room on 2<sup>nd</sup> floor
- Trash chute on every floor
- Informational TV in Foyer
- All bathrooms have tubs except handicap units

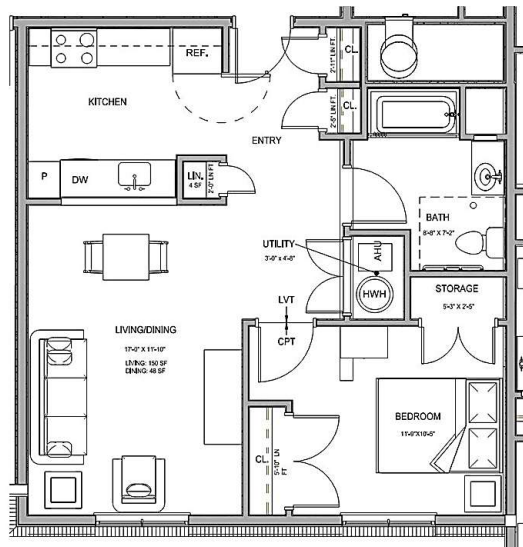
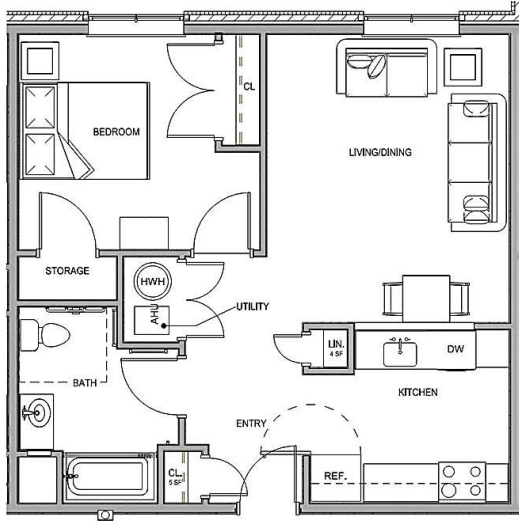
Property  
Management  
provided by  
St. Peters  
Management

**THE 1 BEDROOM APARTMENTS ARE 652 SQUARE FEET OF LIVING (SOME APARTMENTS ARE LARGER)**

**THERE ARE 2 VERSIONS OF THE 1 BEDROOM APARTMENTS – SQUARE FOOTAGE IS SIMILAR**

Bedroom: 10'-7"x 11'-7"  
 Bedroom storage: 5'-3"x 2'-5"  
 Living/Dining area: 13'x 15'-5"  
 Linen closet: 4 sq. ft.

Bedroom closet: 12 sq. ft.  
 Bathroom: 8'-8"x 10'-7"  
 Kitchen: 9'-4"x 9'-8"  
 Coat closet: 5 sq. ft.

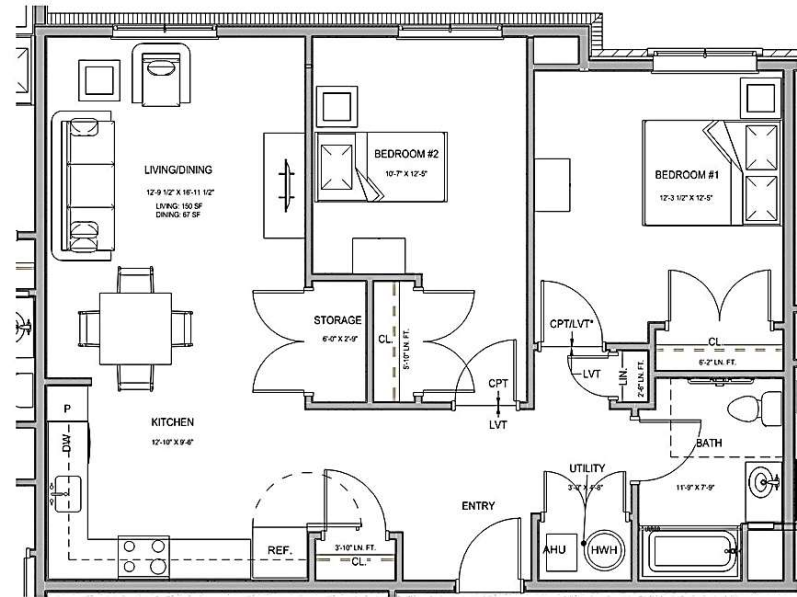


**THE 2 BEDROOM APARTMENTS ARE 916 SQUARE FEET OF LIVING (SOME APARTMENTS ARE LARGER)**

**2 BEDROOM APARTMENTS**

Bedroom 1: 12'-3"x 12'-5"  
 Bedroom 2: 10'-7"x 12'-5"  
 Bathroom: 11'-9"x 7'-7"  
 Living/Dining area: 12'-9"x 16'-11"  
 Coat closet: 8 sq. ft.

Bedroom 1 closet: 12 sq. ft.  
 Bedroom 2 closet: 12 sq. ft.  
 Kitchen: 12'-10"x 9'-9"  
 Linen closet: 4 sq. ft.  
 Storage: 15 sq. ft.



**NOTE: APARTMENTS ARE NOT FURNISHED. LAYOUTS ARE FOR ILLUSTRATION ONLY.**